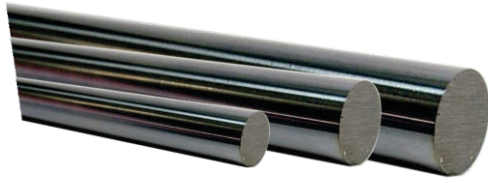
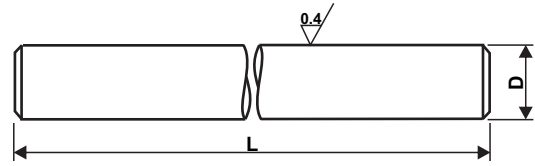


Eixo Linear



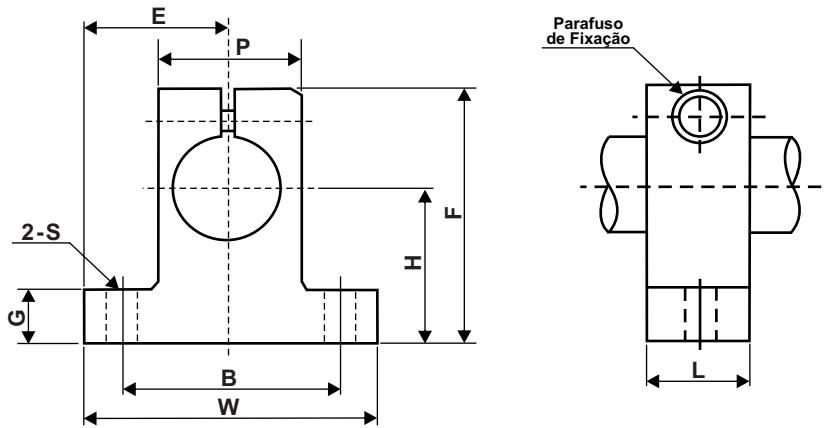
**Cromado e Retificado
SAE 1045**



Código	$\varnothing D$ (mm)	Tolerância	
		g6	h6
Eixo-06-Curso	6		
Eixo-08-Curso	8	-0.01 / -0.01	0 / -0.009
Eixo-10-Curso	10		
Eixo-12-Curso	12		
Eixo-16-Curso	16	-0.009 / -0.017	0 / -0.011
Eixo-20-Curso	20		
Eixo-25-Curso	25	-0.007 / - 0.020	0 / -0.013

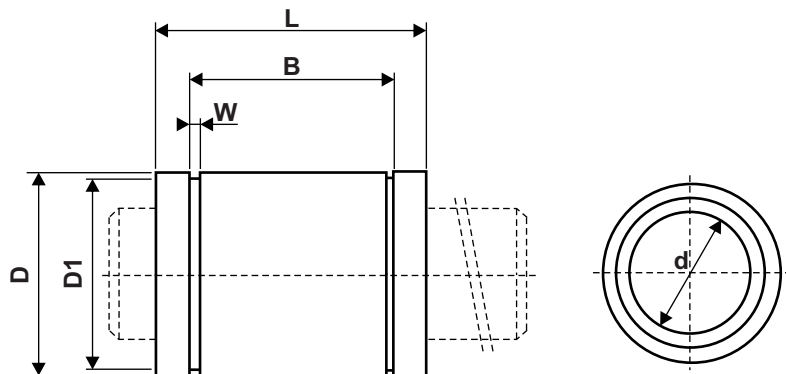
L = Comprimento desejado.

Suporte para eixo linear - Série SL



Código	\varnothing Eixo	H	E	W	L	F	G	P	B	S	Parafuso de Fixação
SL-8	8	20	21	42	14	37.5	6	18	32	5.5	M4
SL-13	13	23	21	42	14	37.5	6	20	32	5.5	M4
SL-16	16	27	24	48	16	44	8	25	38	5.5	M5
SL-20	20	31	30	60	20	51	10	30	45	6.6	M6
SL-25	25	35	35	70	24	60	12	38	56	6.6	M6

Rolamento Linear - Série RL



Código	$\varnothing d$	Tolerância de "d"	$\varnothing D$	Tolerância de "D"	$\varnothing D1$	L	W	B
RL-12	12	0 / 0.009	21	0 / -0.013	20	30	1.3	23
RL-16	16	0 / 0.009	28	0 / -0.013	27	37	1.6	26.5
RL-20	20	0 / 0.009	32	0 / -0.013	30.5	42	1.6	30.5
RL-25	25	0 / 0.010	40	0 / -0.016	41	59	1.85	41